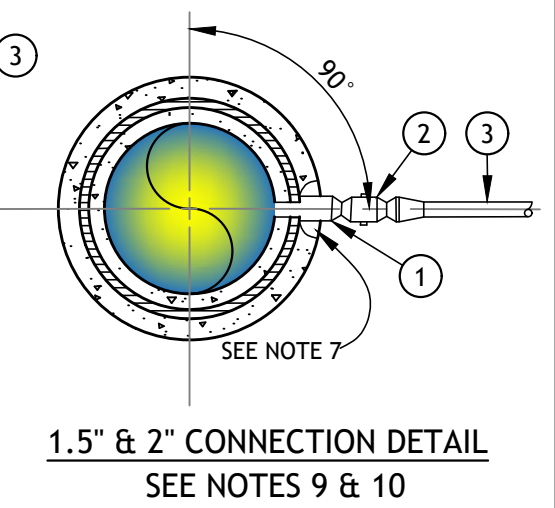
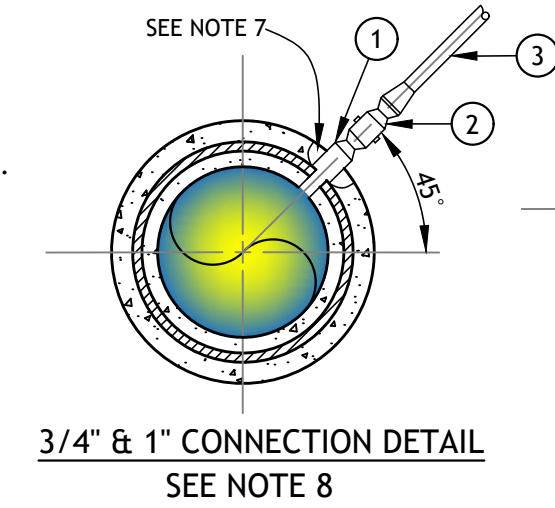
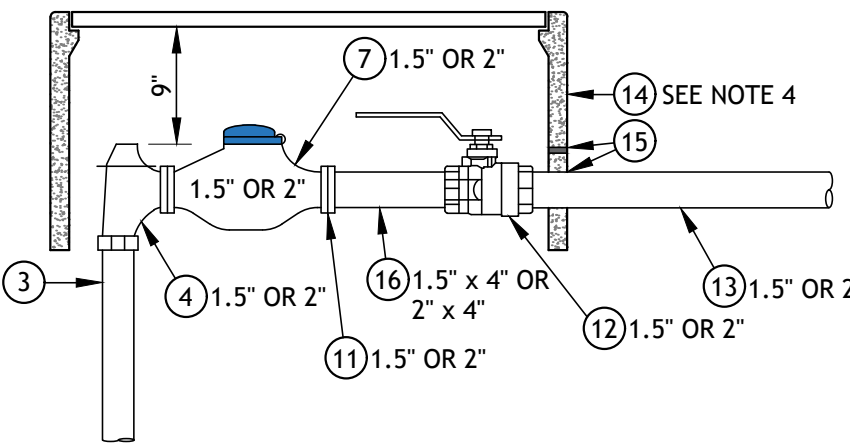
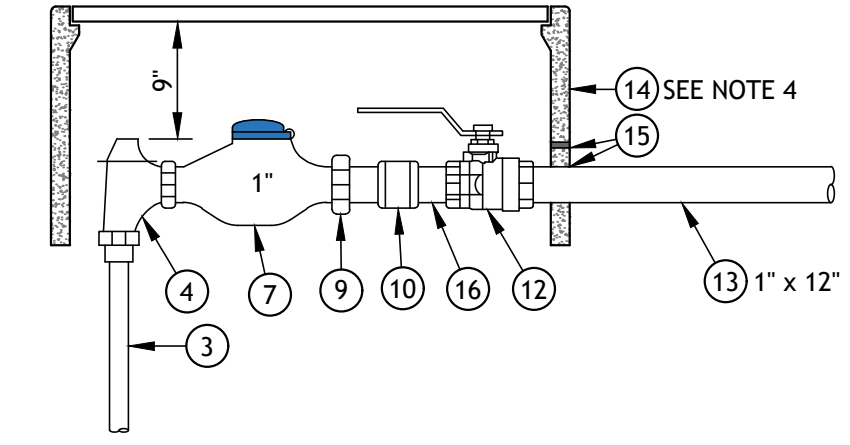
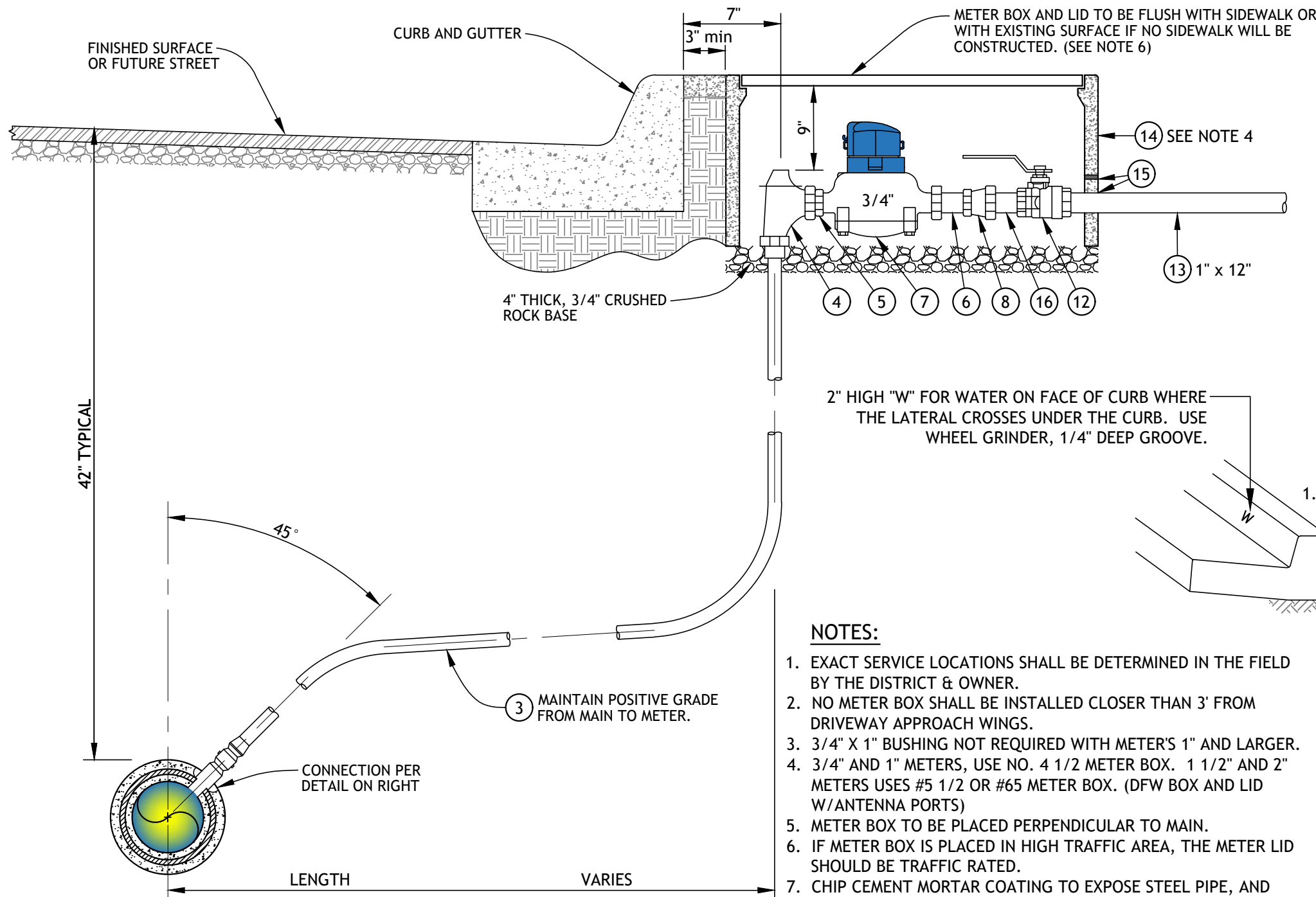


REV: 3/29/2022 J.WOLF
 M:\ENGINEERING - SECURED\STANDARDS\DWG_2022_UPDATE\WATER_W-101D_WATER_SERVICE_INSTALLATION FOR C.M.L. & C.STEEL PIPE_2022.DWG

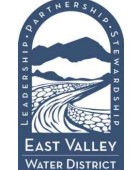



NOTES:

1. EXACT SERVICE LOCATIONS SHALL BE DETERMINED IN THE FIELD BY THE DISTRICT & OWNER.
2. NO METER BOX SHALL BE INSTALLED CLOSER THAN 3' FROM DRIVEWAY APPROACH WINGS.
3. 3/4" X 1" BUSHING NOT REQUIRED WITH METER'S 1" AND LARGER.
4. 3/4" AND 1" METERS, USE NO. 4 1/2" METER BOX. 1 1/2" AND 2" METERS USES #5 1/2" OR #65 METER BOX. (DFW BOX AND LID W/ANTENNA PORTS)
5. METER BOX TO BE PLACED PERPENDICULAR TO MAIN.
6. IF METER BOX IS PLACED IN HIGH TRAFFIC AREA, THE METER LID SHOULD BE TRAFFIC RATED.
7. CHIP CEMENT MORTAR COATING TO EXPOSE STEEL PIPE, AND THEN REPAIR CEMENT MORTAR COATING.
8. 1" SERVICE SADDLE, CORP. STOP AND SERVICE LINE WILL BE USED FOR ALL 3/4" AND 1" METER INSTALLATIONS.
9. 1.5" SERVICE SADDLE, CORP. STOP AND SERVICE LINE WILL BE USED FOR ALL 1.5" METER INSTALLATIONS.
10. 2" SERVICE SADDLE, CORP. STOP AND SERVICE LINE WILL BE USED FOR ALL 2" METER INSTALLATIONS.

ITEM MATERIALS:

- | | |
|------------------------------------------------------------------------------------|------------------------------------------------------------------|
| ① WELD COUPLING, NO SADDLE
1" MINIMUM | ⑧ 3/4" x 1" BELL, BRASS |
| ② CORPORATION STOP (I.P.T.) TO COPPER
1" MINIMUM | ⑨ 1" x 2-5/8" METER COUPLING |
| ③ SERVICE TUBING TYPE "K" SOFT COPPER
(SEE NOTES 8 - 10 FOR INSTALLATION SIZES) | ⑩ 1" COUPLING, BRASS |
| ④ ANGLE METER STOP (CURB STOP),
1" MINIMUM | ⑪ METER FLANGE, 1.5" OR 2" |
| ⑤ 1" x 1- 1/4" METER BUSHING | ⑫ BALL VALVE, 1" MINIMUM, BRASS
(CUSTOMER PRIVATE SHUTOFF) |
| ⑥ 3/4" x 2-1/2" METER COUPLING | ⑬ NIPPLE, BRASS (TAILPIPE) |
| ⑦ WATER METER (DISTRICT WILL SET METER
ONCE FEES HAVE BEEN PAID) | ⑭ METER BOX & LID, POLY |
| | ⑮ LEAVE A MINIMUM 1" CLEARANCE
BETWEEN TOP OF PIPE AND CUTOUT |
| | ⑯ 1" X 4" NIPPLE, BRASS |

WATER SERVICE INSTALLATION 3/4" THRU 2" (C.M.L. & C.)		
	EAST VALLEY WATER DISTRICT, ENGINEERING DEPARTMENT	EVWD STD. DWG. W-101D
	APPROVED BY:  JEFF NOELTE, P.E. 67924 DIRECTOR OF ENGINEERING & OPERATIONS	
APRIL 2022 REVISION		SHEET 1 OF 1