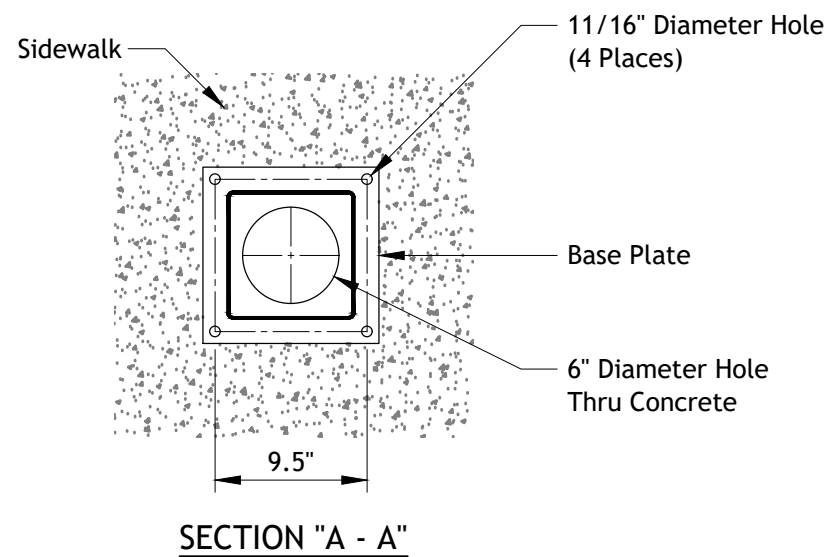
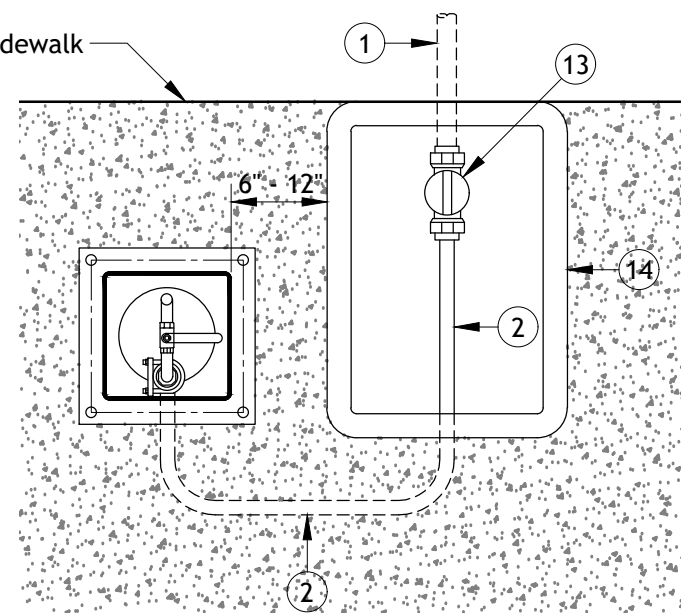
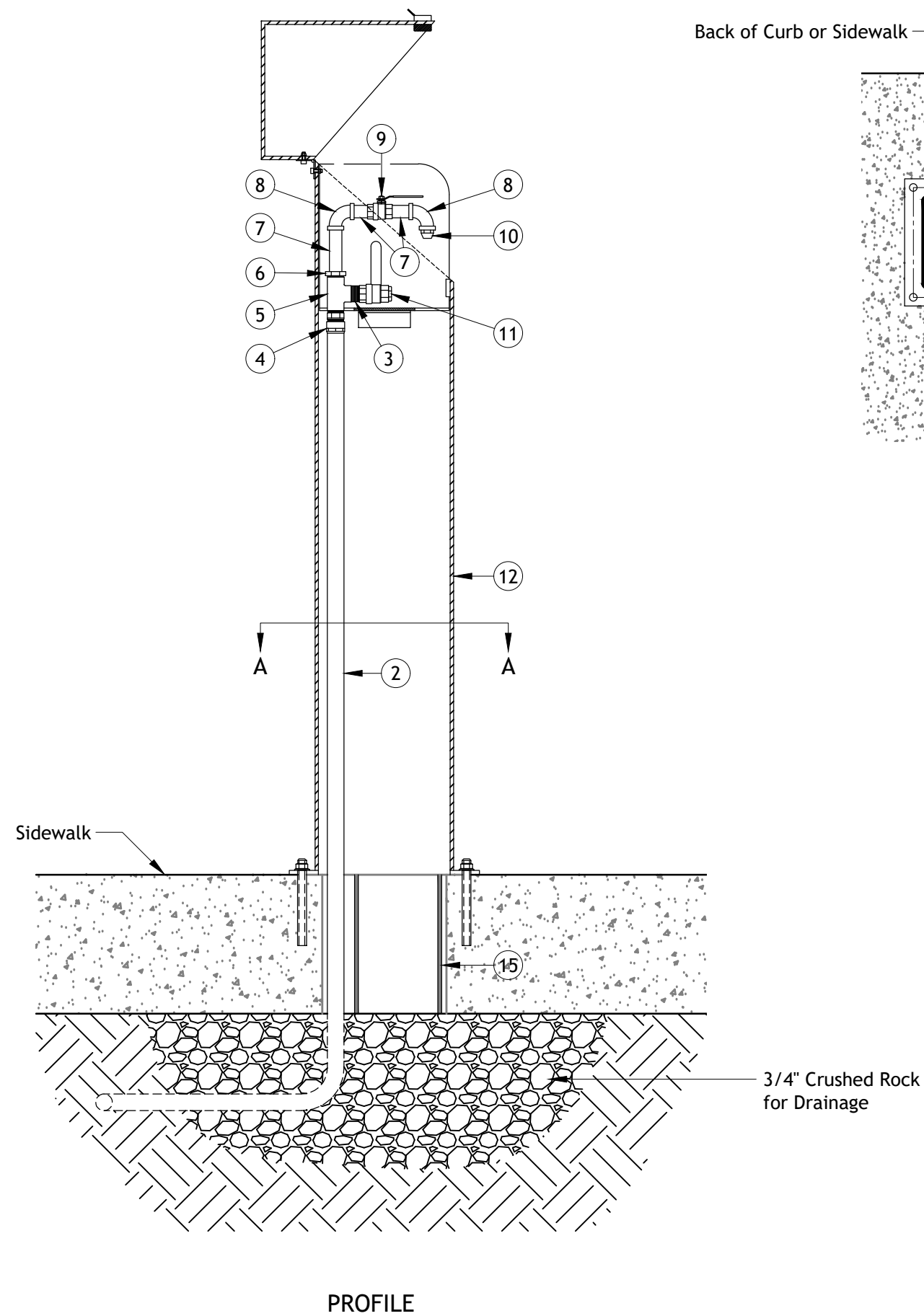


REV: 3/30/2022 J.WOLF
 M: \ENGINEERING - SECURED\STANDARDS\DWG\2022_UPDATE\WATER\W-122_SAMPLING_STATION_2022.DWG



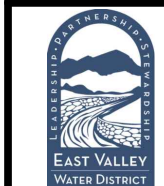
ITEM MATERIALS:

- ① SERVICE CONNECTION PER EVWD STD. DWG. W-1
- ② 3/4" SERVICE TUBING TYPE "K" SOFT COPPER
- ③ 3/4" MALE CLOSE COUPLING, BRASS
- ④ 3/4" MALE x COMPRESSION ADAPTOR, BRASS
- ⑤ 3/4" TEE, BRASS
- ⑥ 3/4" X 1/4" REDUCER, BRASS
- ⑦ 1/4" NIPPLE, BRASS
- ⑧ 1/4" 90° ELBOW, BRASS
- ⑨ 1/4" BALL VALVE, BRASS
- ⑩ 1/4" FLARE NUT, BRASS
- ⑪ 3/4" BALL VALVE, WITH 3/4" PLUG, BRASS
- ⑫ WATER SAMPLING STATION, MODEL EZ-01F
- ⑬ 1" X 3/4", COMPRESSION X COMPRESSION METER STOP
- ⑭ #4 1/2 METER BOX AND LID
- ⑮ 4" PIPE SLEEVE, P.V.C.

NOTES:

- 1. All hardware shall be Type 316 stainless steel.
- 2. Fill annular space in slab sleeve with sand.
- 3. Install EVWD Logo Decal "Domestic" or "Recycled" as directed by East Valley Water District.
- 4. Covers shall be manufactured by Armorcast products or Pipeline Products, Inc.
- 5. Unless otherwise specified: dimensions are in inches.
- 6. Tolerances: .xx ±.03 frac ±1/16
 .xxx ±.010 ang ±0' - 30'
- 7. Break sharp edges to r.010
- 8. Interpret per ANSI y14.5m
- 9. Steel welding per AWS D1.1 - 94
- 10. Aluminum welding per AWS D1.2 - 94
- 11. Machine finish $\sqrt{125}$ or better

WATER SAMPLE STATION



EAST VALLEY WATER DISTRICT, ENGINEERING DEPARTMENT
 APPROVED BY:

Jeff Noelte
 JEFF NOELTE, P.E. 67924
 DIRECTOR OF ENGINEERING & OPERATIONS

APRIL 2022
 REVISION

EVWD
 STD. DWG.
 W-122

SHEET 1 OF 1