

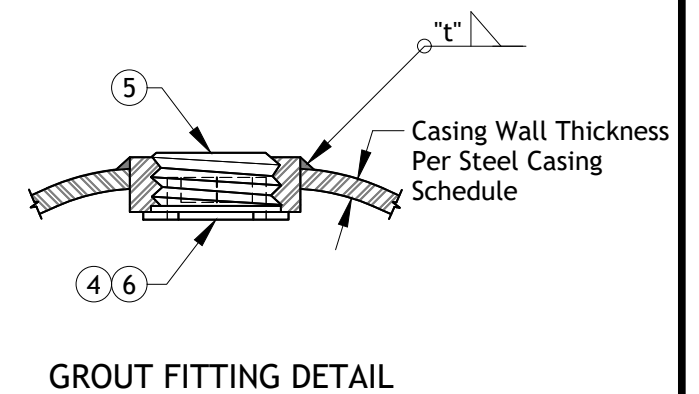
ITEM MATERIALS:

- ① STEEL CASING
- ② CARRIER PIPE JOINT BELL, BEYOND
- ③ STAINLESS STEEL CASING SPACERS WITH UHMW POLYETHYLENE RUNNERS
- ④ GROUT FITTING @ 8' O.C. PER DETAIL HEREON. FOR ALL CASINGS 24" IN DIA. AND LARGER, INSTALL ONE COUPLING IN A 6 O'CLOCK POSITION @ 8' O.C.; STAGGER COUPLINGS BETWEEN 10 O'CLOCK AND 2 O'CLOCK POSITIONS EVERY 4 LINEAR FEET ALONG CASING AXIS
- ⑤ 3" NPT THREADED STEEL PLUG WITH FLUSH HEAD AND INTERNAL TURN HANDLE
- ⑥ 2" NPT STANDARD WEIGHT STEEL PIPE HALF COUPLING
- ⑦ CASING END SEAL WITH STAINLESS STEEL WORM-SCREW BAND CLAMP



NOTES:

- 1. Casing shall be installed by the Bore, Jack and/or Tunnel Method.
- 2. Size and thickness of casing shall be as shown in schedule. For long bores or special situations greater wall thickness than shown in schedule may be required.
- 3. All steel casing pipe field joints shall be welded full-circumference.
- 4. Carrier pipe shall be pressure tested prior to sealing ends of casing.
- 5. Each end of casing shall be sealed with approved rubber casing end seals.
- 6. Backfill for casing in open cut shall be per EVWD Std. Dwg. S-114.
- 7. Number and placement of spacers on carrier pipe per Manufacturer's Specification.

Steel Casing Schedule			
VCP SIZE	BELL O.D.	MIN. CASING SIZE, I.D.	MIN. WALL THICKNESS
6"	11"	18"	5/16"
8"	14"	20"	3/8"
10"	16"	24"	3/8"
12"	19"	27"	3/8"
15"	24"	30"	1/2"
18"	27"	36"	1/2"
PVC SIZE	BELL O.D.	MIN. CASING SIZE, I.D.	MIN. WALL THICKNESS
6"	7.1"	16"	5/16"
8"	9.5"	18"	5/16"
10"	11.9"	20"	3/8"
12"	13.9"	24"	3/8"
15"	18.0"	27"	3/8"
18"	21.8"	30"	1/2"



M:\Engineering - Secured\Standards\DWG\2022 Update\Sewer

STEEL CASING FOR SEWER PIPE		
	EAST VALLEY WATER DISTRICT, ENGINEERING DEPARTMENT	EVWD STD. DWG. S-113
	APPROVED BY:  JEFF NOELTE, P.E. 67924 DIRECTOR OF ENGINEERING and OPERATIONS	
		SHEET 1 OF 1